

38

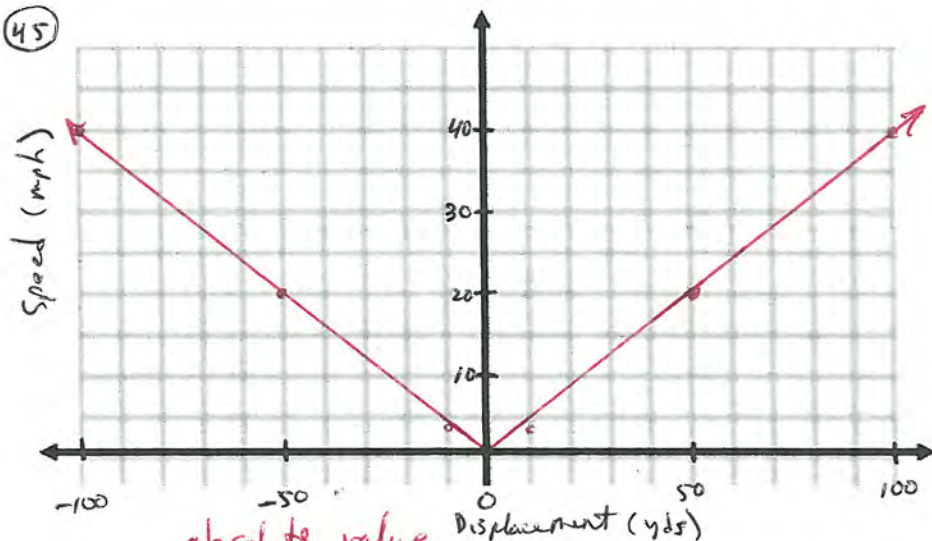
A (-1, -3)

B (1, -3)

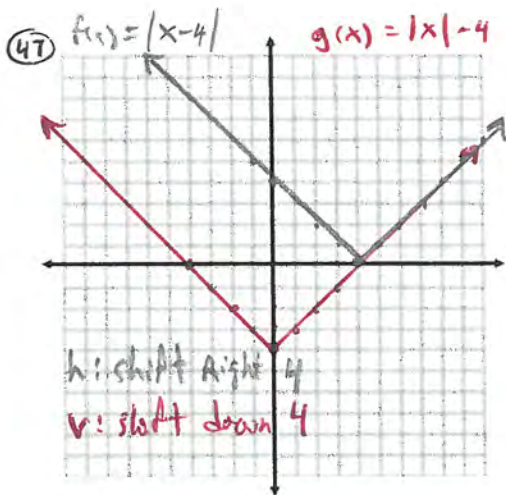
C (-1, -1)

D (-3, -1)

45



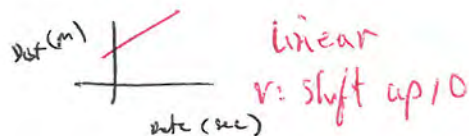
absolute value
8 mph



49. $f(x) = x - 2$

yes
h: shift right 2
v: shift down 2

50. $1m/sec = Rate$



51. ^{height}
 $h(t) = -16t^2 + 32t + 5.2$

a. quadratic

b. 0, 0 seconds have passed

c. $h(0) = 5.2$ ft

61. $3x + y = 1$

x-int $y = 0$

$(\frac{1}{3}, 0)$

y-int $x = 0$

$(0, 1)$

62. $x - 2y = 8$

x-int

$(8, 0)$

y-int

$(0, -4)$